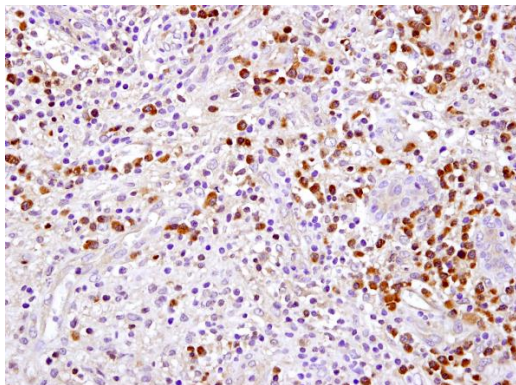


## ANTICUERPOS OPTIMIZADOS PARA INMUNOHISTOQUÍMICA

ANTICUERPO	CASA COMERCIAL	REFERENCIA
8H2DG	Abcam	ab48508
ALDH1A1	Santa Cruz	sc-374149
B-CATENIN	BD	571-781
CA-125	Cell Marque	760-2610
CALBINDIN	Santa Cruz	sc-7691
CANT1	Novusbio	NBP1-19344
*CASPASA 3	Cell Signaling	#9661



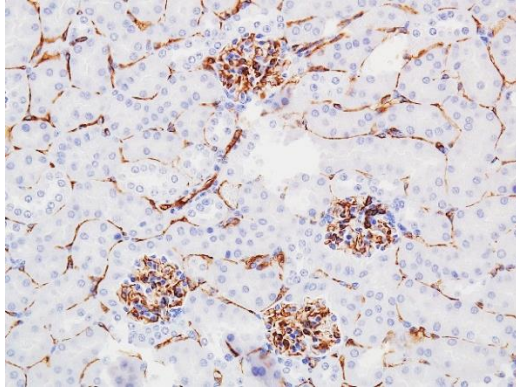
Caspasa 3 (Cell Signaling) en timo

CASPASA3	Elabscience	E-AB-13815
CD11c (D1V9Y)	Cell Signaling	97585
CD138	Roche	760-4248
CD15	Abcam	ab135377
CD20	Roche	760-2531
CD24	Santa Cruz	sc-19651
CD3	Abcam	AB5690
CD3	Roche	790-4341

\*CD31

Abcam

ab182981

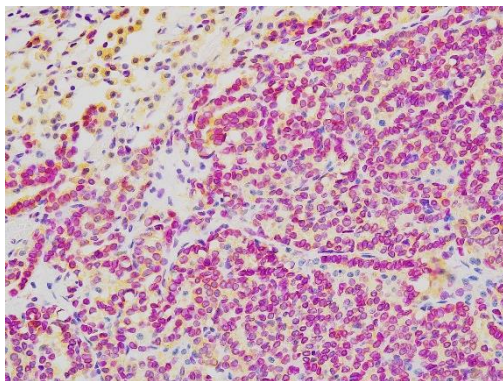


CD31(Abcam) en riñón

*CD31	Roche	760-4378
CD38	Santa Cruz	sc-374650
CD4	InvitroF	14-976682
CD44	Thermo	MA1-10225
CD45	Abcam	ab10558
CD45R (B220)	Invitrogen	14-0452-82
CD68	Abcam	ab125212
CD68	Roche	790-2931
CD8	Abcam	AB217344
CD8	Roche	790-4460
CDH1	Elabscience	E-AB-53267
C-FOS	Santa Cruz	sc-166940
CIC	Invitrogen	PA5-83721
CICLINA D1	Roche	790-4508
CK 19	Roche	760-4281
CK 20	Roche	790-4431
CK 7	Roche	790-4462
CK 8/18	Roche	760-4344
CK13	Epitomics	AC-0066A
CLAUDIN 1	Elabscience	E-AB-12455
CLEC4F	R&D Systems	AF2784
c-MYC	Abcam	ab32072
c-MYC	Roche	790-4628

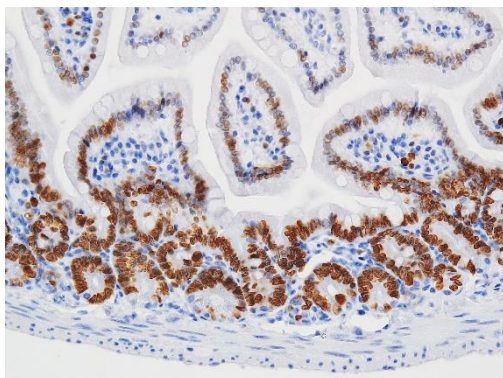
COLAGENO 1	Millipore	#AB765P
COLL11A1	Oncomatrix	CI0011
COX-2	Elabscience	E-AB-31012
DGTA1	Bioss	bs-233R
DKK-1	Santa Cruz	sc-374574
DKK-3	Elabscience	E-AB-14042
DMRT1	Santa Cruz	sc-377167
DOBLECORTINA	Abcam	ab18723
DR5	Abcam	ab8416
E2F3	Abcam	ab50917
E-CADERINA	Roche	790-4497
ENDOGLINA / CD105	Sino Biological	50407-RP02
ETV5	Proteintech	13011-1-AP
F3	Elabscience	E-AB-19355
FAP	Elabscience	E-AB-11218
FAP	Abcam	AB207178
FAP	Huabio	ET-1704-23
FIBRILLARIN	Encor	MCA-38F3
FIBRONECTINA	Sigma	F3648
FOSFATASA ALCALINA	Abcam	ab108337
FOXO1	Cellsignaling	2880
FXYD3	Fine Test	FNab03259
GAD2	Elabscience	E-AB-15661
GALECTINA 4	Abbkine	ABP51395
GASTRINA	Roche	760-243
GCDFP15	Biorbyt	orb157077
GFP	Cell Signaling	#2555
GLUCAGON	Sab	#49334
GLUCAGON	Roche	760-2644
GPR137B	Thermo	PA5-33629
HISTONA H3 METHYL	Cell Signaling	#9733
HISTONA H3.3 MUTANTE	Millipore	ABE419

HA-TAG	Cell Signaling	#3724
HA-TAG	Genscript	A01244
HER2	Cell Signaling	#2165
HIF- $\alpha$	Abcam	ab113642
IL18	Elabscience	E-AB-14154
IL-6	Invitrogen	MP5-20F3
INSULINA	Bioss	bs-0862R
INVOLUCRINA	Biolegend	924401
ITPR 3	Elabscience	E-AB-16530
JMJD3	Abcam	ab38113
K14	Biolegend	905301
KDEL	Invitrogen	PA1-013



KDEL (amarillo) + Lamin B1 (púrpura) en adenocarcinoma de pulmón

KC	Mybiosource	MBS840366
*KI67	Vitro	MAD-000310

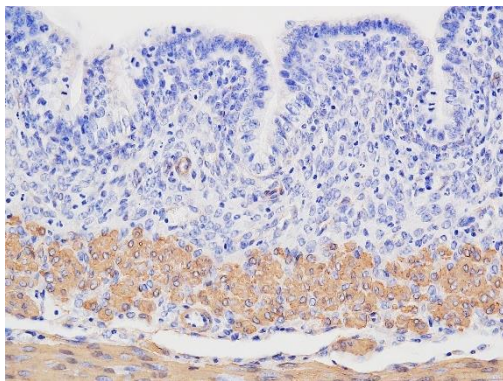


KI67 (Vitro) en intestino delgado

*KI67	Roche	790-4286
-------	-------	----------

LAMIN B1	Abcam	AB1604
LAMP1	Cell Signaling	#9091
Ly6G	Affymetrix	14-5931
MAMAGLOBIN	Biorbyt	orb100955
M-CADERINA	Elabscience	E-AB-31987
MEGALINA	Santa Cruz	sc-16478
MIOSINA	Rockland	600-401-416
MSLN	Elabscience	E-AB-10472
MUC1	Elabscience	E-AB-16747
MUC5AC	Roche	760-4389
NCAPH (BRRN1)	Sigma/Abcam	HPA003008 / ab154105
NFAT1	Abcam	ab2722
N-GAL/LIPOCALIN	Novusbio	NBP2-21621
NKCC1	Invitrogen	PA5-118800
NOXO1	Novusbio	NBP1-77889
NPR1	Novusbio	BP1-31333
OSF-2/POSTN	Biovendor	RD181045050
OSTEOCALCINA	Mybiosource	MBS178420
p100/p52	Cell Signaling	#3017
p16	Roche	805-4713
p53	Abcam	ab31333
p62	Abcam	ab109012
PAI-1	Novusbio	NBP1-19773
PANCITOQUERATINA	Cell Signaling	#4545
PANCITOQUERATINA	Roche	760-2595
PAX5	Bd	610862
pERK	Cell Signaling	#9101
pGAB1	Sigma	SAB4504412
pH2AX	Millipore	#050-636
pH2AX	Cell Signaling	#2577
PHOSPHO HISTONA 3	Sigma	H0412
REC. ESTROGENOS	Abcam	ab32063

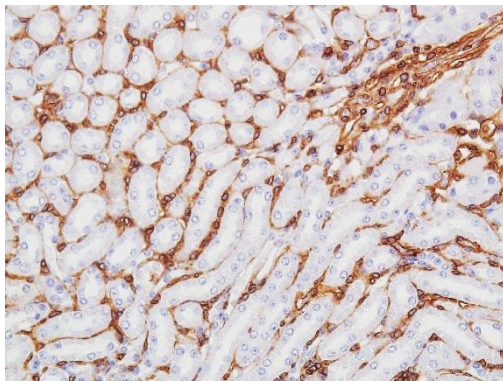
RBFOX 3	Abclonal	A15959
REC. DE ANDROGENOS	Vitro	710QD3
RFP	Mbl	PM005
RIOK3	Sigma	HPA024184
RRM2	Invitrogen	PA576703
rRNA	Santa Cruz	sc-33678
RUNX2	Abcam	ab192256
S100P	Abbkine	ABP56117
SERPINA 4	Elabscience	E-AB-33486
SERPINA B5	Elabscience	E-AB-14208
SGLT1	Abcam	ab14686
SGLT2	Boster	A03748-1
SLC4A4	Elabscience	E-AB-14348
*SMA	Roche	760-2833



SMA (Roche) en útero

SNAP25	Elabscience	E-AB-14354
SOX-2	Santa Cruz	sc-365823
SOX-9	Millipore	AB5535
SPC	Millipore	AB3786
SULF-1	Atlas Antibodies/Sigma	HPA054728
TAM	Lab15 (CIC)	#####
TNF-a	Bioss	bs-2081R-TR
TSPAN1	Sigma	HPA011909
TWIST 1	Aviva Systems	ARP37997-T100
UTX	Cell Signaling	#33510

*VIMENTINA (V9)	Roche	790-2917
*VIMENTINA EP21	Cell Marque	347R-24



Vimentina (Cell Marque) en riñón

WT1	Abcam	ab89901
YAP1	Novusbio	NB110-58358
ZO-1	Proteintech	21773-1-AP
ZS GREEN	Clontech	632474